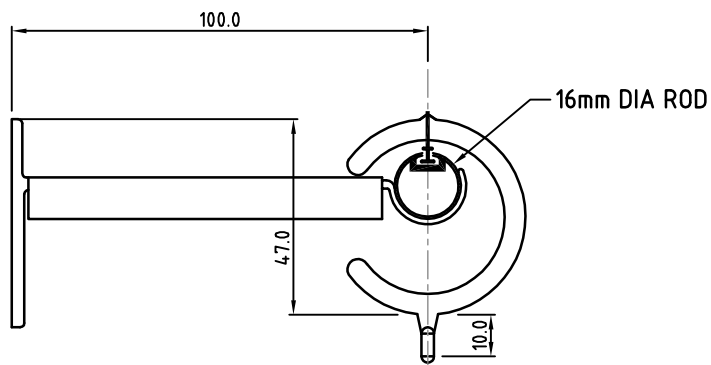


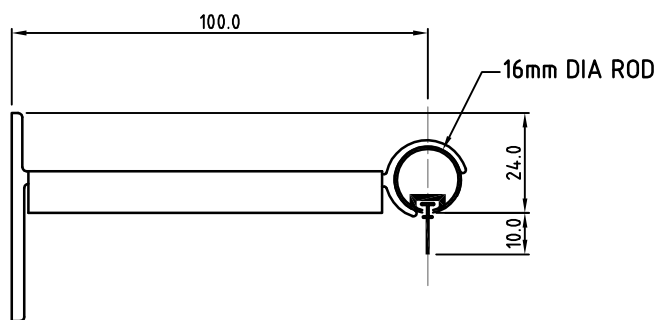


16mm & 25mm 100 BRACKETS



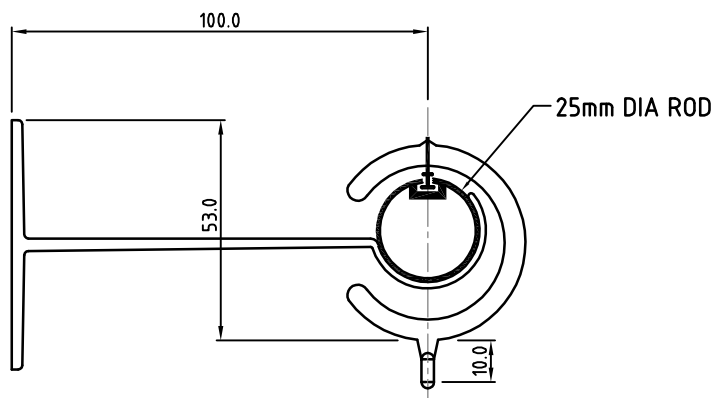
Base Plate : 50mm
Top of base plate to bottom of 25mm ring : 47mm
Eyelet on ring sits 10mm below rod

**16mm - 100mm Ring Bracket
(with 25mm Ring)**



Base Plate : Height 50mm, Width 20mm
Top of base plate to bottom of rod : 24mm
Glide sits 10mm below rod

16mm - 100mm Glide Bracket

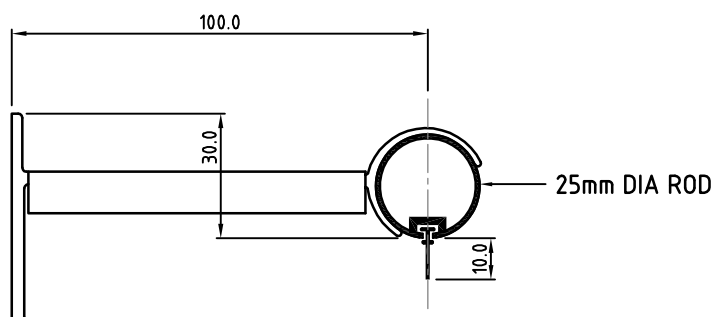


Base Plate : Height 60mm, Width 20mm
Top of base plate to bottom of 25mm ring : 53mm
Eyelet on ring sits 10mm below rod



For Vantage rod the top of the rod is 17mm below the top of the base plate

25mm - 100mm Ring Bracket



Base Plate : Height 50mm, Width 20mm
Top of base plate to bottom of rod : 30mm
Glide sits 10mm below rod

25mm - 100mm Glide Bracket